

DESCRIPTION

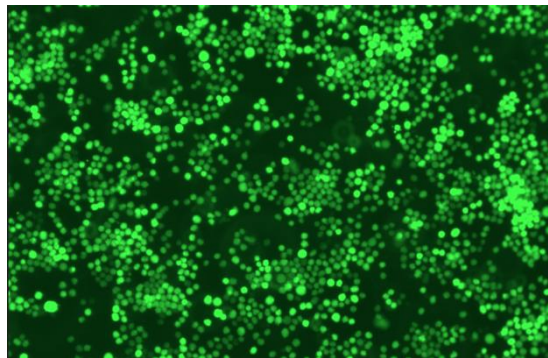
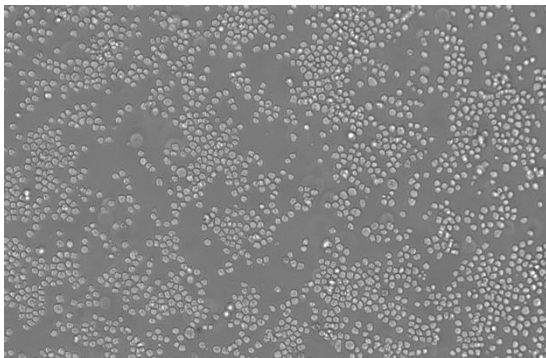
Cell Line Name	GFP-NS0 stable cells
Catalog Number	C3037
Host Cell	NS0, mouse myeloma cell line
Lot Number	#0303
Gene Sequences	TurboGFP (GenBank:ASW25889.1)
Quantity	Two vials of frozen cells (1×10^6 per vial)
Culture Medium	RPMI with 10% FBS, 250 $\mu\text{g}/\text{mL}$ hygromycin
Freezing Medium	90% FBS and 10% DMSO
Storage	Liquid nitrogen immediately upon receipt

THAWING AND CULTURING

- Remove the cell vial from liquid nitrogen tank and thaw cells quickly in a 37°C water bath
- Transfer the cells to a 15 ml centrifuge tube and slowly add 5 ml of pre-warmed complete growth medium
- Centrifuge the cells at 200x g for 5 min
- Remove the supernatant
- Resuspend cell pellet with 7 ml of complete growth medium and transfer cells to a T25 flask
- Incubate cells in an incubator with 5% CO₂ at 37°C
- Split the cells twice a week or as needed.

DATA

- a) Analysis of GFP expression by fluorescence microscopy



REFERENCES

1. Bueno-Soler A, et al., Appl Microbiol Biotechnol. 2022 Aug;106(13-16):5007-5021.

Disclaimer: For research use only. Not for use in humans.