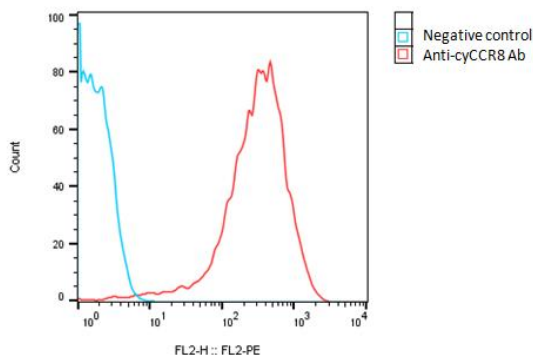


SPECIFICATIONS

Catalog Number	C3031
Cell Line Name	FLAG-Cynomolgus CCR8-CHO-K1 stable cell line
Accession Number	NP_001274549.1
Host Cell	Adherent CHO-K1
Quantity	Two vials of frozen cells (2x10 ⁶ per vial)
Culture Medium	DMEM with 10% FBS, 4μg/ml puromycin
Freezing Medium	90% FBS and 10% DMSO
Storage	Liquid nitrogen

DATA

Detection of cyCCR8 expression in CHOK1-Flag-cyCCR8 cells using an anti-cyCCR8 monoclonal antibody followed by staining with PE-anti human antibody. The cells that are stained only with PE-anti-human IgG antibody are used as a negative control.


BACKGROUND

CCR8, also known as CY6, TER1, CCR-8, CKRL1, CDw198, CMKBR8, GPRCY6, CMKBRL2, CC-CKR-8, is a C-C motif chemokine receptor of the G protein-coupled receptor (GPCR) family and is expressed on the cell surface of regulatory T cells (Tregs). Activation of CCR8 by binding of C-C motif chemokine ligands CCL1, CCL8, CCL16 and CCL18 can lead to activating the functionality of Tregs in immune response suppression. CCR8 expression is upregulated and highly expressed in many cancers such as bladder, breast, and colorectal cancer increasing migration and invasion activity and antiapoptosis in Tregs. This activity shows an association between CCR8 expression and cancer progression making CCR8 a potential target molecule for cancer immunotherapy.

References

Saito M, Suzuki H, Tanaka T, Asano T, Kaneko MK, Kato Y. Development of an Anti-Mouse CCR8 Monoclonal Antibody (C₈Mab-1) for Flow Cytometry and Immunocytochemistry. *Monoclon Antib Immunodiagn Immunother*. 2022 Apr 27. doi: 10.1089/mab.2021.0069. Epub ahead of print. PMID: 35483056.

Disclaimer: For research use only. Not for use in humans.