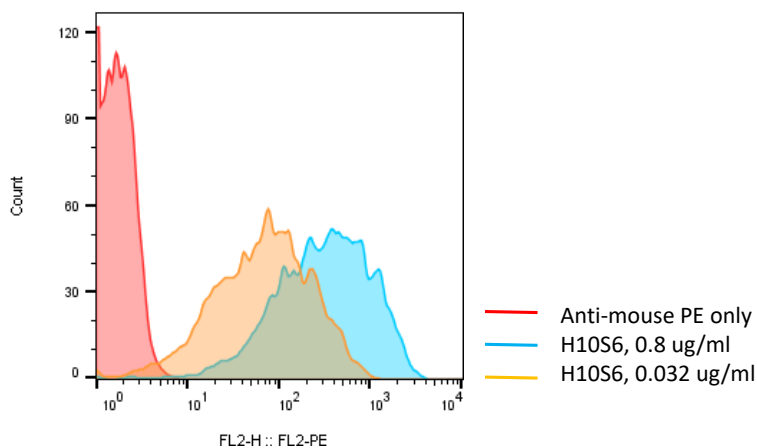


SPECIFICATIONS

Catalog Number	A1033
Product Name	Anti-human CCR8
Source	Purified mouse antibody from hybridoma
Clone Number	H10S6
Specificity	Human CCR8, does not cross-react to cyno CCR8
Isotype	Mouse IgG1
Formulation	1xPBS, pH6.9. Sterile
Stability & Storage	1 month at 4°C; 12 months at <-20°C; Avoid repeated freeze-thaw
Purity	>95%
Protein Aggregation	Not obvious on SDS-PAGE
Application	Flow cytometry, ELISA, cell-based assay

DATA

Detection of human CCR8 expression on human CCR8-CHO-K1 stable cell line (Cat.#C3032) using the anti-human CCR8, clone H10S6(Cat.#A1033).



BACKGROUND

CCR8, also known as CY6, TER1, CCR-8, CKRL1, CDw198, CMKBR8, GPRCY6, CMKBRL2, CC-CKR-8, is a C-C motif chemokine receptor of the G protein-coupled receptor (GPCR) family and is expressed on the cell surface of regulatory T cells (Tregs). Activation of CCR8 by binding of C-C motif chemokine ligands CCL1, CCL8, CCL16 and CCL18 can lead to activating the functionality of Tregs in immune response suppression. CCR8 expression is upregulated and highly expressed in many cancers such as bladder, breast, and colorectal cancer increasing migration and invasion activity and antiapoptosis in Tregs. This activity shows an association between CCR8 expression and cancer progression making CCR8 a potential target molecule for cancer immunotherapy.

References

Saito M, Suzuki H, Tanaka T, Asano T, Kaneko MK, Kato Y. Development of an Anti-Mouse CCR8 Monoclonal Antibody (C₈Mab-1) for Flow Cytometry and Immunocytochemistry. *MonoclonAntibImmunodiagnImmunother*. 2022 Apr 27. doi: 10.1089/mab.2021.0069. Epub ahead of print. PMID: 35483056.

Disclaimer: For research use only. Not for use in humans.