

DESCRIPTION

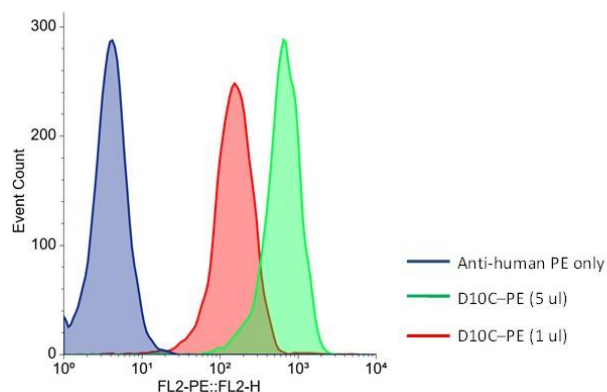
Product Name	Anti-human CLDN 18.2 mAb, D10C-PE
Product Description	R-Phycoerythrin (PE) conjugated recombinant D10C antibody, human IgG1
Clone Name	D10C
Protein Concentration	0.1 mg/mL
Protein Formulation	Sterile PBS, pH 6.8, 0.1% NaN ₃
Storage Condition	< -20°C (Avoid repeated freezing and thawing)
Protein Stability	At least 30 days at 4°C and at least 6 months at -20°C
Applications	Flow cytometry analysis
Recommended usage	1-5ul per staining in 50-100ul volume

BACKGROUND

Claudin-18 (CLDN18) is a member of a large family of four-span transmembrane proteins called Claudins. These proteins are the essential components of the mammalian tight junctions (TJs) in epithelial cells. Claudin-18 has two splice variants, 18.1 and 18.2. While CLDN18.1 is specifically expressed in the lung tissue, CLDN18.2 expression in normal tissue is more restricted and is only detected in small patches of stomach mucosal. CLDN18.2 expression is elevated in many types of epithelial cancers including stomach, esophagus, pancreatic and ovarian cancers. The expression of CLDN18.2 is not only detected in primary tumors, but also in the metastatic sites. Therefore, CLDN18.2 is an ideal target for monoclonal antibody-based cancer therapies.

DATA

- A.** Detection of human CLDN18.2 expression on human CLDN18.2-CHO-K1 cells (Cat. #C3011) using recombinant anti-huCLDN18.2 mAbs D10C-PE (Cat. #A1008-PE).



Disclaimer: For research use only. Not for use in humans.