

DESCRIPTION

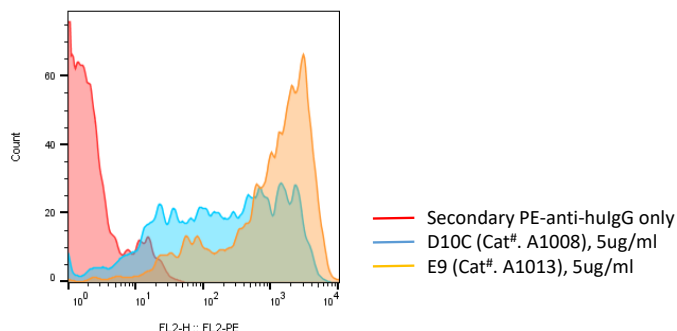
Product Name	Anti-human CLDN18.2 mAb E9
Catalog Number	A1013
Product Description	Recombinant anti-huCLDN18.2 mAb E9, produced in HEK293 cells
Clone Number	E9
Isotype	Human IgG1
Concentration	1 mg/mL
Formulation	1x PBS, pH6.8
Storage Conditions	<-20°C; Avoid repeated freezing and thawing
Protein Stability	2 weeks if stored at 4°C; >6 months if stored at <-20°C
Estimated Purity	>95%
Protein Aggregation	Not obvious on SDS-PAGE
Applications:	Flow cytometry analysis

BACKGROUND

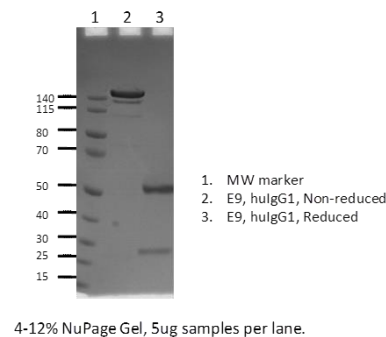
Claudin-18 (CLDN18) is a member of a large family of four-span transmembrane proteins called Claudins. These proteins are the essential components of the mammalian tight junctions (TJs) in epithelial cells. Claudin-18 has two splice variants, 18.1 and 18.2. While CLDN18.1 is specifically expressed in the lung tissue, CLDN18.2 expression in normal tissue is more restricted and is only detected in small patches of stomach mucosal. CLDN18.2 expression is elevated in many types of epithelial cancers including stomach, esophagus, pancreatic and ovarian cancers. The expression of CLDN18.2 is not only detected in primary tumors, but also in the metastatic sites. Therefore, CLDN18.2 is an ideal target for monoclonal antibody-based cancer therapies.

DATA

- A.** Detection of human CLDN18.2 expression on human CLDN18.2-KATO III cells (Cat. #C3016) using recombinant anti-huCLDN18.2 mAbs D10C (Cat. #A1008) and E9 (Cat. #A1013), followed by staining with a secondary PE-anti-human IgG antibody



- B.** SDS-PAGE analysis of anti-human CLDN18.2 mAb E9



Disclaimer: For research use only. Not for use in humans.