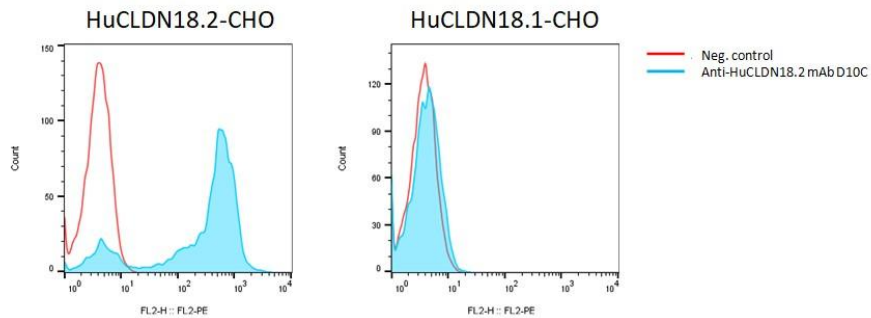


DESCRIPTION

<b>Product Name</b>	Anti-human CLDN 18.2 monoclonal antibody
<b>Product Description</b>	Recombinant human IgG1 antibody against human CLDN18.2
<b>Clone Name</b>	D10C
<b>Protein Concentration</b>	1 mg/mL
<b>Protein Formulation</b>	Sterile PBS, pH 6.8
<b>Storage Conditions</b>	< -20°C (Avoid repeated freezing and thawing)
<b>Protein Stability</b>	At least 30 days at 4°C and at least 6 months at -20°C
<b>Estimated Purity</b>	95%
<b>Protein Aggregation</b>	Not obvious by SDS-PAGE
<b>Applications</b>	Cell binding
<b>Specificity Analysis</b>	Anti-huCLDN18.2 mAb, clone D10C (Cat. #A1008-200), at 20 µg/mL was incubated with human CLDN18.2-CHO cells (Cat. #C1001) and human CLDN18.1-CHO cells (Cat. #C1017), followed by staining with PE-anti human IgG secondary antibody



Disclaimer: For research use only. Not for use in humans.